



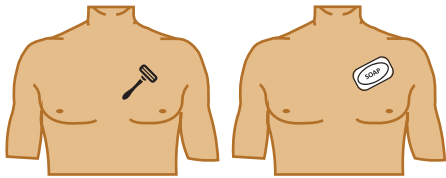
**TZ Medical**  
Sparked by your ideas

# PATIENT QUICK START GUIDE

## TRIDENT™ NANO HOLTER PATCH

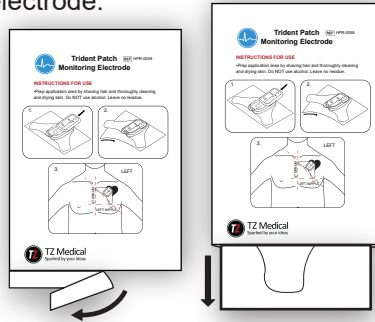
### Step 1: Skin Prep

Remove all hair from electrode site with a razor and scrub the electrode application sites with alcohol wipe, or warm soapy water. Dry area thoroughly.



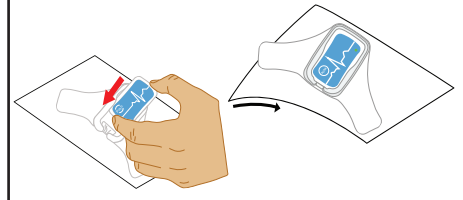
### Step 2: Open Package

Open package and remove the electrode.



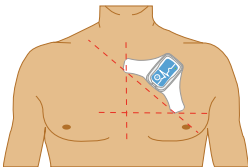
### Step 3: Insert Device

Slide the device into the electrode, matching the picture on the electrode. Hold the device in place until the green light turns off. Peel the release liner from the electrode.



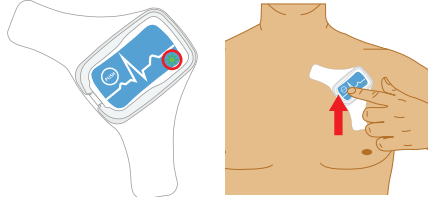
### Step 4: Place Device

Place the electrode on the chest at a 45° angle. The “wings” should span between the sternum and left nipple with the device body towards the left shoulder. Press firmly on all parts of the electrode.



### Step 5: Check Status

Check the recording status by briefly pressing the button. The device will blink 5 times with the color of light indicating the status as shown to the right.



### Step 6: Status Lights

Recording  Blinks green 5 times	Electrode has poor connectivity  Blinks yellow 5 times
Recording is complete  Blinks red 5 times	Device requires charging  Blinks green & yellow

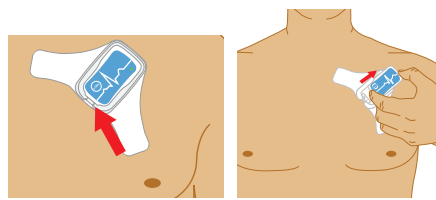
### Step 7: Record Event

If you feel a symptom while wearing the monitor, hold the button for 4 seconds to record the event. The light will blink green and an “Event Recorded” tone will play.



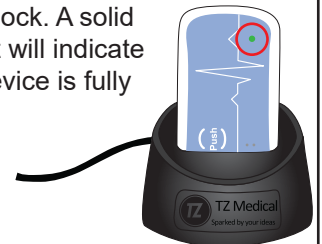
### Step 8: Remove Device

Eject the device by firmly pressing the front edge near the status/event button and slide the device upward. Then slowly peel the electrode from your skin.



### Step 9: Charging

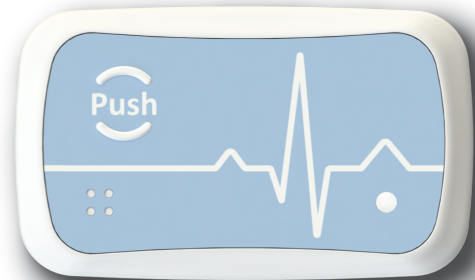
When the device requires charging (alternating G-Y-G-Y-G light), remove the device from the patch electrode and insert into the charging dock. A solid green light will indicate that the device is fully charged.



For clinical support, please contact your medical provider.

For technical support related to your cardiac monitoring device, please call **(971) 250-4237** or email **clearbeatsupport@tzmedical.com**. Include your name and preferred contact method (phone, email, other), and a support representative will respond as soon as possible.

# TRIDENT™ NANO



## What you need to know while monitoring...



Avoid fully submerging or exposing device to excessive amounts of water or moisture. The device is water resistant, not waterproof. For optimal results, avoid spraying water directly into the sensor. It is recommended to face away from the shower head while showering.



Allow electrode sites to dry completely and remove all residue before applying adhesive electrodes.



It may be difficult to observe the LED while wearing the device. Viewing the LED can easily be done by pressing the button while standing in front of a mirror.



When inserting the recorder, firmly press and hold the exposed edge of the device closest to the LED into the electrode patch until the green LED flashes and turns off. This is to ensure that the device is properly recording and maintains a water-resistant seal while showering.



If you need to apply a new electrode for an extended study, recharge the device and repeat the instructions for application.



It is recommended to take a warm shower during the removal process of the electrode. If available, apply mineral oil as you peel the electrode away to loosen the adhesive.

